

BRIGG GRAMMAR SCHOOL.

THE GOVERNING BODY.

---

**Chairman :**

LT-COL. O. S. NELTHORPE, D.S.O., M.C., J.P., D.L.

W. A. BEAN, Esq.

W. TAYLOR, Esq.

J. K. BROUGHTON, Esq.

J. DAVY, Esq., J.P.

GEO. V. ECCLES, Esq.

F. G. GOODMAN, Esq., M.D.

A. S. JOHNSON, Esq.

J. T. KETTLE, Esq.

L. H. GOUNDRY, Esq., J.P.

H. STAMP, Esq., J.P.

J. T. CLIFF, Esq., J.P., D.L.

J. R. WATKINSON, Esq.

**Clerk :**

D. BRIGGS, Esq., Brigg.

THE STAFF.

---

**Headmaster :**

H. E. BRYANT, Esq., B.A., Inter B.Sc., London.

**Assistants :**

A. E. KNIGHT, Esq., B.Sc., London.

W. LAMB, Esq., M.A., Honours School of Modern History, Oxon., B.A., London.

H. A. SHUTE, Esq., B.Sc., 1st Class Honours in Chemistry, London, Teaching  
Diploma, London.

M. GAZE, Esq., M.A. 2nd Class Theological Tripos, Cambridge.

A. J. GREGORY, Esq.

M. W. THOMAS, Esq., B.A., 2nd Class, Honours School of Modern History, Oxon.

H. E. HEBB, Esq., B.A., 2nd Class Honours in French and English, Leeds, Teaching  
Diploma, Leeds.

W. E. THUMWOOD, Esq., B.A., Natural Science Tripos, Cambridge.

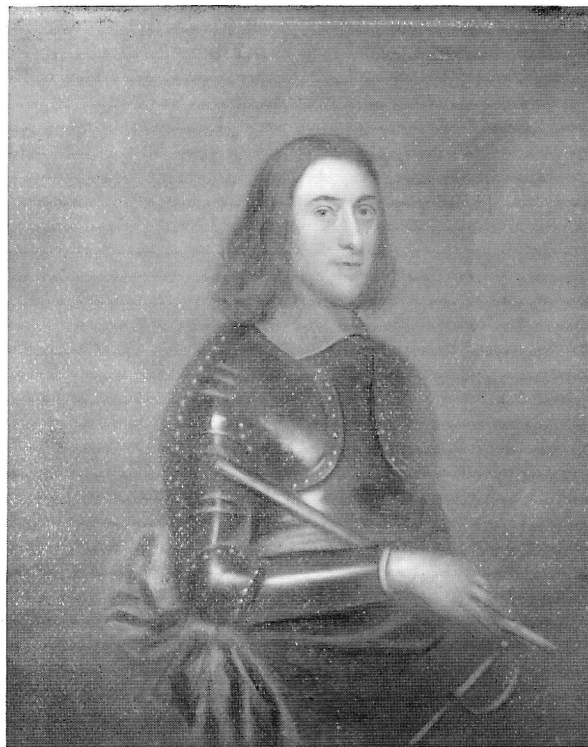
MISS D. COULDREY.

---

W. E. ROWBOTTOM, Esq., Mus. Doc., F.R.C.O., (Piano and Singing)

F. CHARNOCK, Esq., (Manual Work).

THE FOUNDER



SIR JOHN NELTHORPE, BART.



THE SCHOOL HOUSE FROM THE PLAYING FIELD.



THE SCHOOL HOUSE FROM THE GARDEN.

## THE HISTORY OF THE SCHOOL.

THE SCHOOL was founded in the year 1669 by Sir John Nelthorpe, Bart., of Glamford Briggs, as the town of Brigg was then called. The founder was educated at St. John's College, Cambridge, and subsequently became a member of Gray's Inn. He was created a baronet in 1666, and died in 1669. A tablet in Scawby Church bears testimony to his benevolence and zeal in good works. His desire was to provide free education for the boys of his native town and of the various districts of Lincolnshire in which his estates were situated. To this end he furnished the School with sufficient endowment to maintain a Master, who was to teach Latin, Greek and Hebrew, and an "Usher" who was to train the boys in Reading, Writing and Arithmetic. For many years the endowment proved adequate for this purpose, and also provided various scholarships.

A stone over the doorway of the old Schoolroom bears the following inscription:

IOHANNES NELTHORPE BAR :  
SCHOLAM HANC  
EX INSIGNI PIETATE  
PROPRIJS SVMP TIBVS ÆDIFICAVIT  
ET ANNVALI SVBSIDIO DONAVIT  
IN PERPETVVM.  
ANN : DOM :  
M DC.LXXIII.

The date refers to the completion of the building.

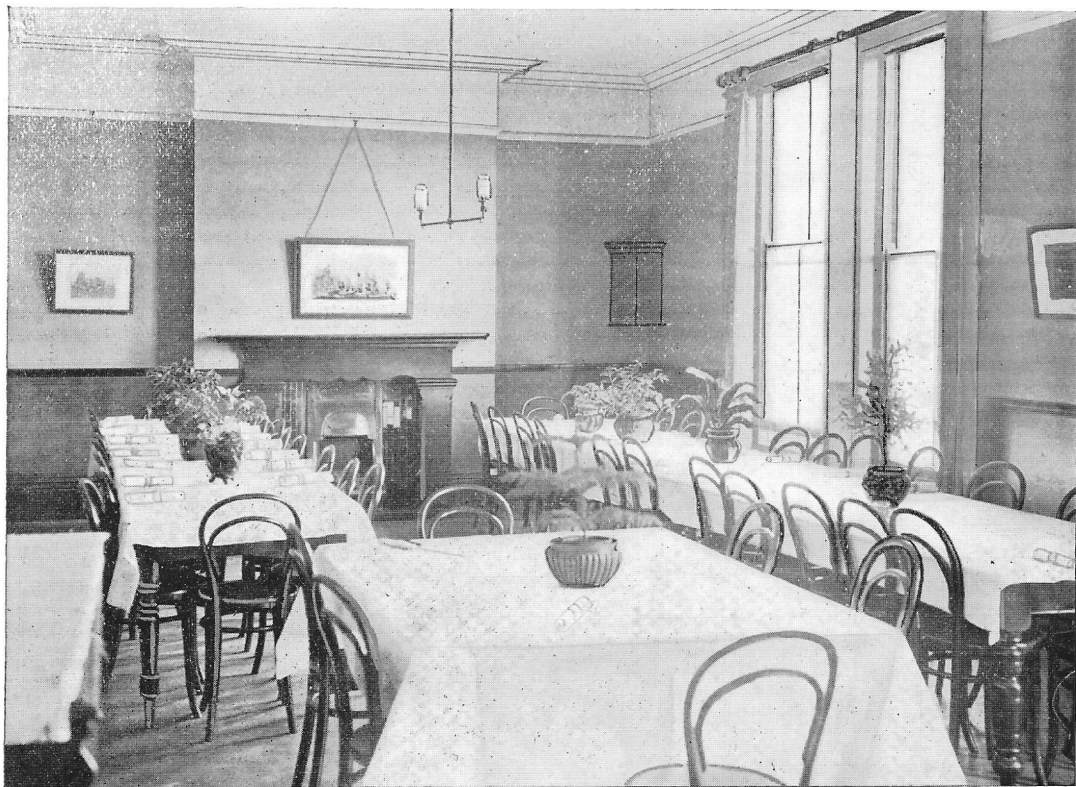
In 1878, the building being somewhat small and out of date, it became necessary to convert the Headmaster's house into classrooms, and a house, with accommodation for some twenty boarders, was erected about fifty yards from the original site.

A few years later a Sanatorium was built, and in 1900, to bring the School up to modern requirements, a Science Laboratory, and a Carpenter's Shop were added.

In 1906, the School was re-organised under a scheme approved by the Board of Education and the Lindsey County Council.

In 1911, a new Classroom and Master's Study were added to the School Buildings, and in 1912, the Boarding House was enlarged to accommodate sixty boarders.

In 1918 further classrooms were added, and in 1921 a Physics Laboratory.



THE DINING HALL.



#### SITUATION OF THE SCHOOL.

THE SCHOOL is situated on the outskirts of the Town, about a quarter of a mile from the Railway Station, and stands in its own grounds of ten acres, of which the various buildings and the School House garden occupy about three acres, the Playing Field consisting of the remaining portion.

The Town of Brigg is exceptionally healthy (the death rate being less than 12 per thousand) and the situation of the School is admirable.

#### DESCRIPTION OF BUILDINGS.

THE SCHOOL BUILDINGS comprise a Big Schoolroom with Classrooms attached, two Science Laboratories and a Workshop. All the rooms are well lighted and ventilated, and are in excellent repair.

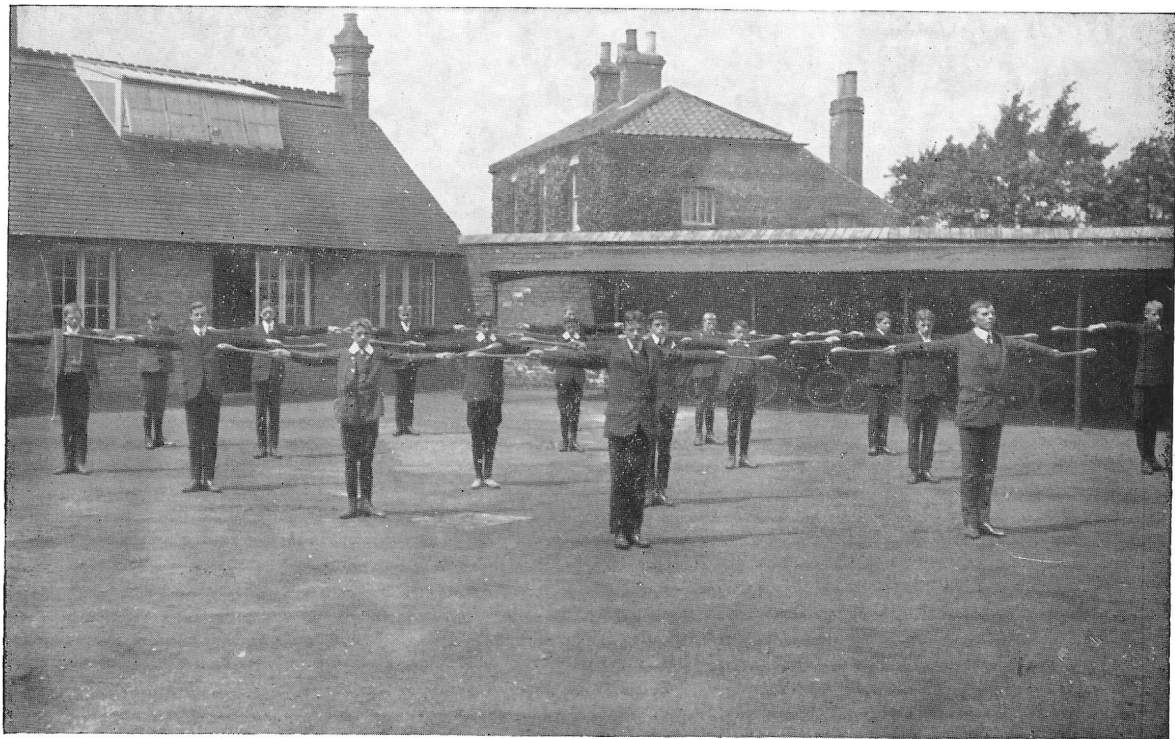
The Boarding House is large and well built, and suitable in every way for the reception of Boarders, of whom it will accommodate sixty. The four large dormitories are lofty and cheerful rooms, and look out on the Cricket Field. The House also comprises a large Dining Hall, Common Rooms for Masters and Boys, Bathrooms, and Lavatories.

The Sanatorium is isolated, and stands at a convenient distance from the main buildings.

The Governors hold a Certificate, of recent date, testifying to the high standard of the drainage system and water supply of all the premises.

The Cricket Field is seven acres in extent and immediately adjoins the School House.

A Swimming Bath was added by friends of the School in 1914.



THE PLAYGROUND.

#### INSPECTION.

The School is inspected by the Board of Education, and is recognised as efficient.

#### CURRICULUM.

The Course of Instruction is in accordance with the Regulations of the Board of Education for Secondary Schools, and is adapted for preparing boys for the Universities, the Professions, the Civil Service, and Commercial pursuits.

The work is arranged with special reference to the Cambridge School Certificate Examinations, successful candidates in which are exempted, under certain conditions, from the Preliminary Examinations for Matriculation at the Universities, and from the Entrance Examinations of the following Societies and Institutes (among others): Medical, Dental, Legal, Veterinary, Pharmaceutical, Civil Engineers, Chartered Accountants.

The subjects taught are the various branches of English, Mathematics, Latin and Natural Science (Theoretical and Practical), Religious Knowledge, Modern Languages, Drawing, Singing, and Woodwork.

There is always a post-matriculation Form, from which boys proceed regularly to the Universities.

The written work of each boy passes under the review of the Headmaster at frequent intervals.

#### HOURS OF WORK.

Morning School, 9—12.45, with an interval of 10 minutes. Afternoon School 2—3.30.

For Junior Boys the hours are 9—12; 2—3.30.  
Wednesday and Saturday are half-holidays.

#### BOARDING HOUSE ARRANGEMENTS.

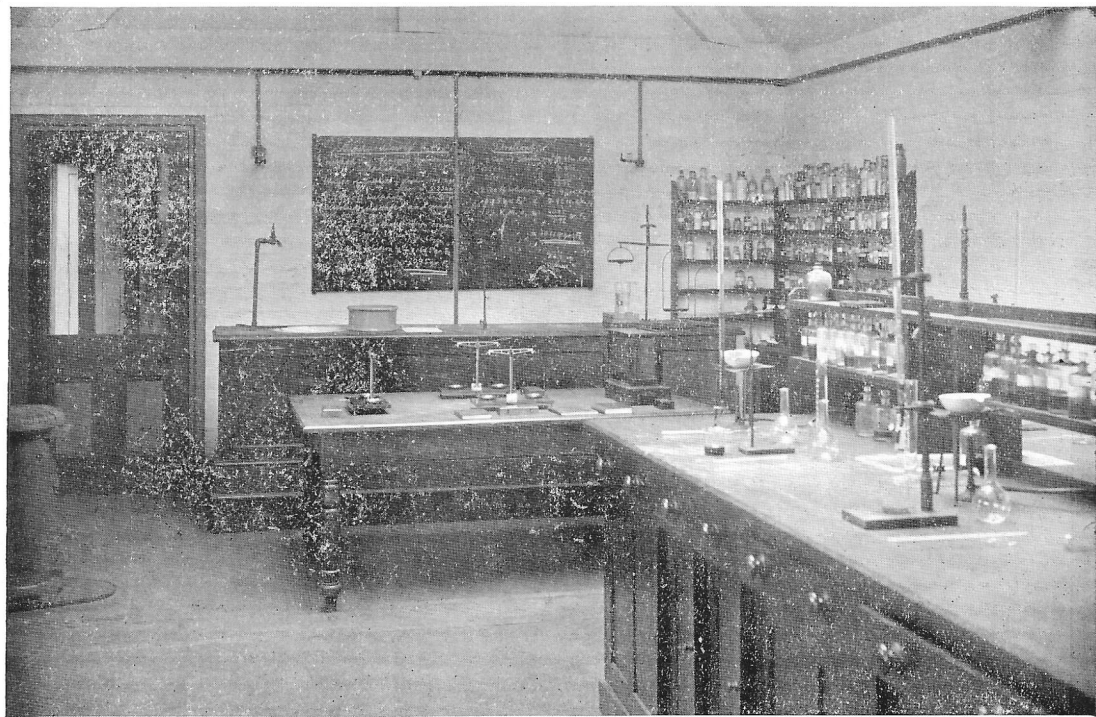
The Boarding House Arrangements are under the general supervision of the Headmaster and the personal supervision of the House Master.

#### TIME TABLE :—

|     |            |      |         |
|-----|------------|------|---------|
| 8-0 | Breakfast. | 1-0  | Dinner. |
| 5-0 | Tea.       | 7-30 | Supper. |

The diet is unlimited and excellent in every respect.

Dinner is provided at the School House for Day Boys who come from a distance. Especial attention is given to the general comfort of the boys, and delicate and backward boys receive every care.



THE SCIENCE LABORATORY.

### THE GAMES.

The Games are organised by the Masters, who also take part in them. All boys are expected to play, unless prevented by weak health. The Physical development of the boys receives careful attention, and physical exercises form a regular part of the school routine. The School possesses a Miniature Rifle Range, and boys over twelve years of age may learn the use of the rifle.

A Cadet Corps affiliated to the 5th Lincolnshire Regiment has been established.

### TERMS.

The school year is divided into three terms.

### FEES.

|                            |     |     |           |          |
|----------------------------|-----|-----|-----------|----------|
| Tuition—For boys under 12  | ... | ... | £ 3 0 0   | per term |
| Tuition—For boys over 12   | ... | ... | £ 3 10 0  | „        |
| Boarding—For boys under 12 | ... | ... | £ 14 11 8 | „        |
| Boarding—For boys over 12  | ... | ... | £ 15 0 0  | „        |

BOOK CLUB. All books in use in the school are loaned by the Club. The subscription is 5/- per term.

A reduction in Boarding Fees is made in the case of weekly Boarders.

Tuition Fees include charges for stationery and games. Boarding Fees include charges for laundry.

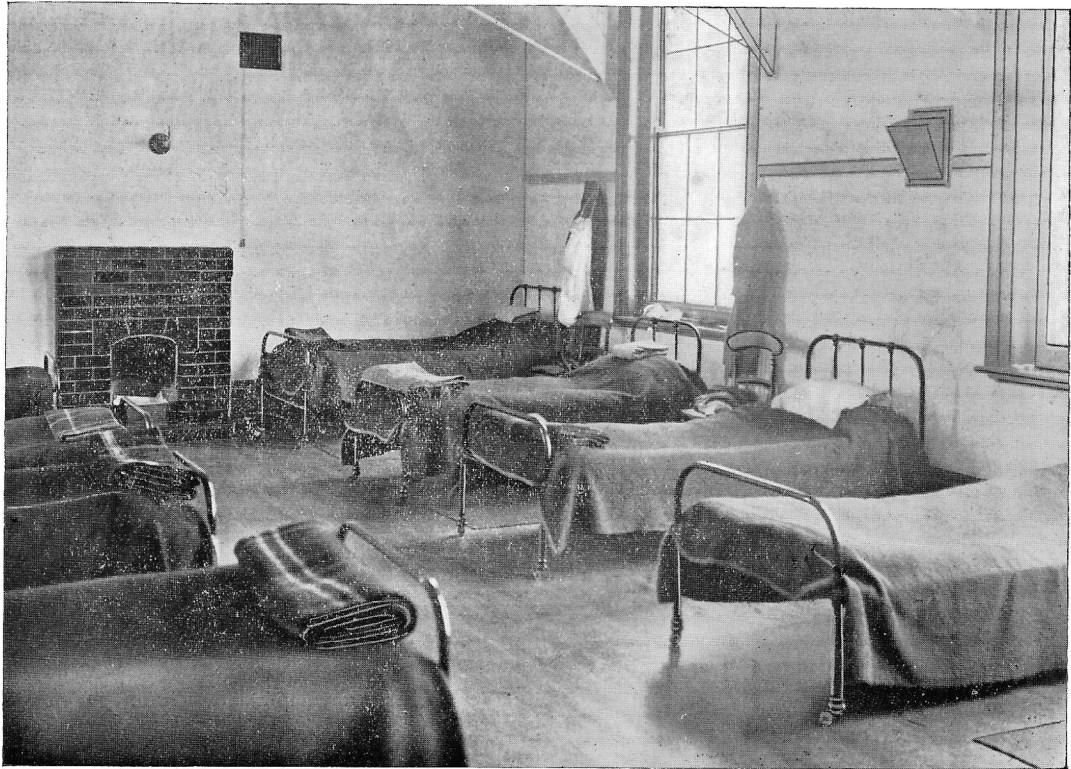
The Library Subscription of 1/- per term is optional

All Fees are payable in advance.

A Term's Notice is required previous to the removal of a pupil.

### BURSARIES.

Bursaries may be awarded by the Governors in partial remission of School Fees in cases of real need.



A DORMITORY.

## REGULATIONS.

Boys are admitted to the Preparatory Forms from the age of eight years.

The usual age of admission to the main part of the School is from 10½ to 11½ years. All boys entering the main part of the School must pass an entrance examination. This rule applies also to boys from the Preparatory Forms.

Boys of 13 years or more, if they have not already attended another Secondary School, are not admitted unless under exceptional circumstances.

To obtain the full advantage of the education offered by the school, boys should remain until the end of the term in which they reach the age of sixteen years. Boys whose parents are willing to sign an agreement with the Governors to this effect will have the preference when a vacancy occurs.

Any pupil whose work or conduct is unsatisfactory may be dismissed from the School.

Each Boy is required on the first day of term to bring a Certificate, signed by his parent or guardian, to the effect that he has not been exposed to infection during the holidays or a Doctor's Certificate that he can return without risk of giving infection.

### REGULATIONS FOR DAY PUPILS.

HOME STUDY.—It is hoped that parents will see that home study is carefully prepared. The time given to it should be one hour in the Lower Forms, and an hour-and-a-half in the Upper Forms. If it is found that home study in the case of individual boys regularly occupies more than the assigned period, the Headmaster will be glad to be informed of the fact. Day pupils may attend the evening class for preparation at the school without charge.

ABSENCE. Pupils should not be absent except in case of illness. Leave of absence for any other reason must be obtained previously from the Head Master. It is requested that a note explaining cause of absence should be brought in every case.

TRAVELLING.—Pupils who travel to and from school by train should not be on the railway platform more than five minutes before the trains are timed to start. Good behaviour is expected at railway stations, in the trains, and in the trams.

DINNER INTERVAL.—Pupils who come from a distance and dine at the School are expected not to leave the premises in the Dinner Interval without special permission.



THE SANATORIUM.

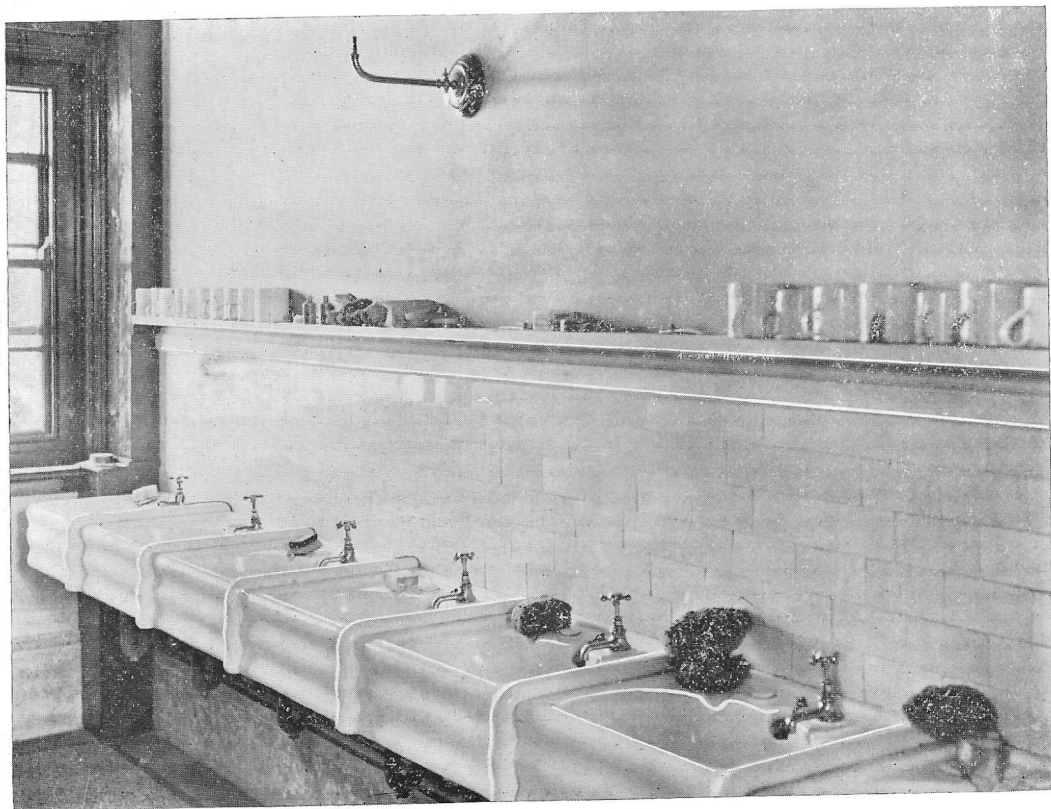




PART OF THE SCHOOL BUILDINGS



THE CORRIDOR.



A LAVATORY.