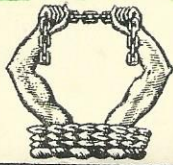




FIDELITAS



November
2nd, 1937



COMMEMORATING
THE OPENING OF THE
NEW BUILDINGS
of the
GIRLS' HIGH SCHOOL
BRIGG

LINDSEY COUNTY COUNCIL

(EDUCATION COMMITTEE)



MISS G. E. HADOW, M.A.

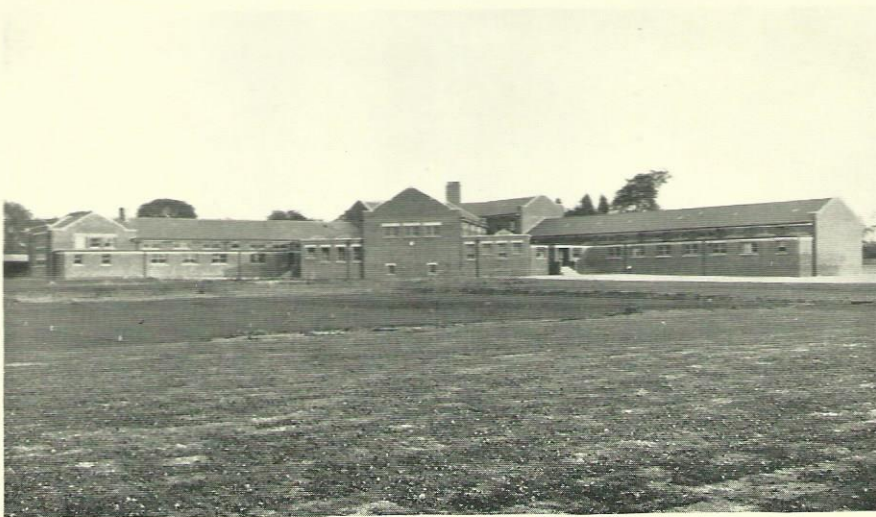
(Principal of the Society of Oxford Home Students)

who will perform the Opening Ceremony.

COMMEMORATING
the Opening of the
NEW BUILDINGS
of the
GIRLS' HIGH SCHOOL
BRIGG

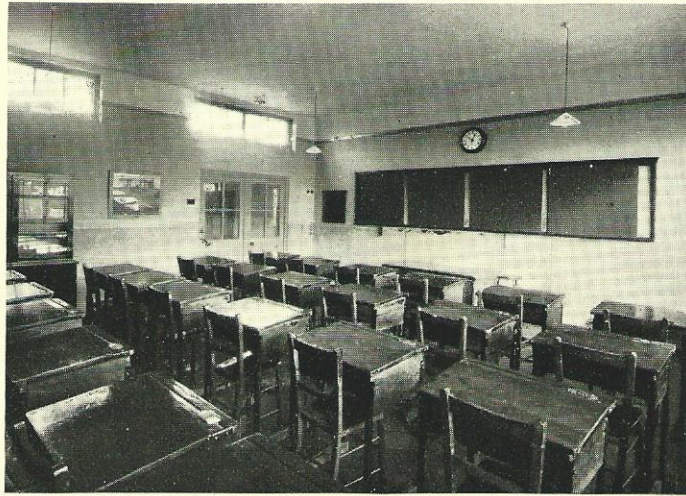


*The Girls' High
School, Brigg
Front Elevation
Centre Portion*



*The Girls' High
School, Brigg
Back Elevation*

*A typical
Classroom*



A Brief Description of THE NEW BUILDINGS OF THE BRIGG GIRLS' HIGH SCHOOL

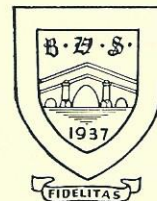
by

PHILIP W. BIRKETT, A.R.I.B.A.

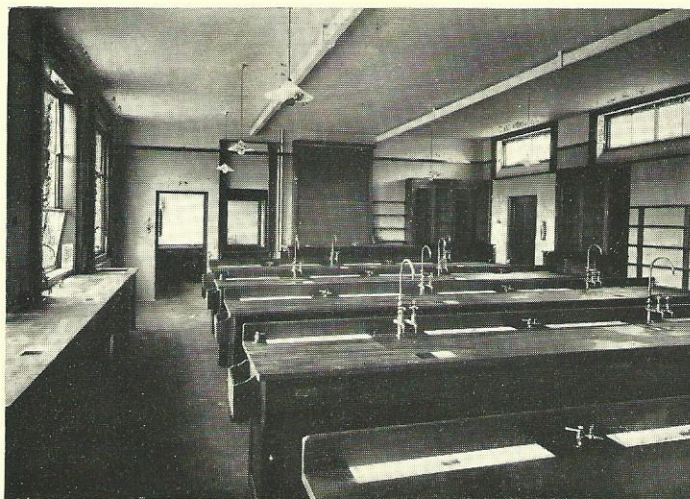
County Architect



These New Buildings replace the existing school which consists of a number of wooden huts placed in a small site adjoining the Vicarage and also a limited amount of accommodation in the Vicarage itself.



*The Science
Laboratory*



In the Basement is situated the Central Heating and Hot Water Supply Plant and Fuel Store, together with a Drying Room fitted with heated racks for drying wet clothes.

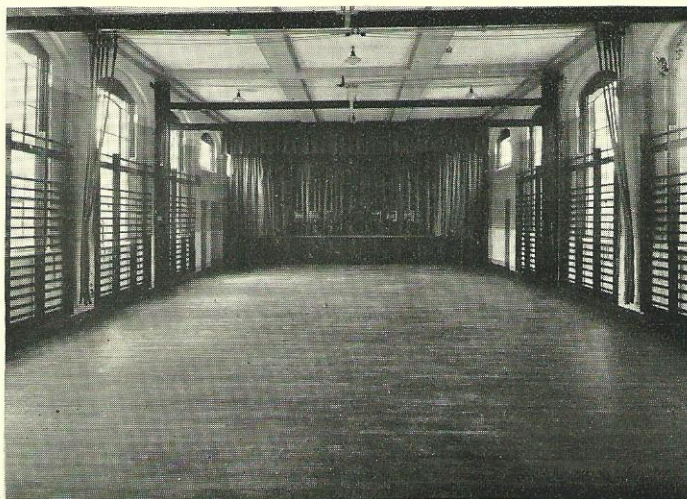
The building has been planned to give a correct aspect for the various rooms with as little distraction as possible from the necessary proximity of the main road.

All the Special Subjects Rooms are fully equipped in accordance with modern practice in school design, while economy in maintenance costs has been considered in determining the various finishing materials of the buildings.

The Heating System is by radiant heat from invisible panels set in the ceilings allowing of thoroughly efficient cross ventilation, whilst maintaining a comfortable temperature in the rooms. The Heating and Hot Water Supply Boilers use a low grade of slack coal as fuel through automatic stokers in order to economise in both fuel and labour costs.



*The
Assembly Hall*



The cooking in the Kitchen is by gas equipment, whilst gas, electric, and coal ranges are provided for teaching purposes in the Domestic Subjects Room.

A large paved playing and physical training space is provided behind the school, while the playing field is laid out as a Hockey Pitch and with Hard and Grass Lawn Tennis Courts.

Cycle sheds are placed along the Northern boundary of the site.

An interesting feature of the frontage is that the iron gates and railings have been made by a Lindsey Blacksmith under the supervision of the Lindsey Rural Community Council.



**USE
GAS**

The Fuel of the Future

This School will show what Gas can do to ensure Cleanliness, Convenience and Safety

ECONOMY

by using GAS is the Housewife's trump-card
This School has looked to the future
why not you?

Address your Enquiries to:

C. E. SMITH, Manager

Brigg U.D.C. Gas Dept.

'PHONE: 97

Order of Proceedings

at the Official Opening of the new Buildings of the Brigg
Girls' High School

by

MISS G. E. HADOW, M.A.,

Principal of the Society of Oxford Home Students,
on November 2nd, 1937.

Rev. F. BURGESS, Chairman of the Governors, will preside.

HYMN:—WHO WOULD TRUE VALOUR SEE.

*Who would true valour see,
Let him come hither :
One here will constant be,
Come wind, come weather.
There's no discouragement
Shall make him once relent
His first avowed intent
To be a pilgrim.*

*Who so beset him round
With dismal stories,
Do not themselves confound—
His strength the more is.
No foes shall stay his might
Though he with giants fight :
He will make good his right
To be a pilgrim.*

*Since, Lord, thou dost defend
Us with Thy Spirit,
We know we at the end
Shall life inherit.
Then fancies flee away !
I'll fear not what men say,
I'll labour night and day
To be a pilgrim.*

2. The Prayer of Dedication will be said by the Venerable
H. T. Parry, Archdeacon of Lindsey.



3. Speech by the Chairman, Rev. F. Burgess, Chairman of the Governors.
4. Presentation of Key to the Opener.
5. **Miss G. E. Hadow, M.A., Principal of the Society of Oxford Home Students, will give an Address and declare the new buildings open.**
6. Song by the School Choir : " Brother James' Air "—
Gordon Jacob.
7. Vote of Thanks to Miss Hadow :
Proposer : Alderman W. Lacey, Chairman of the Lindsey Education Committee.
Secunder : Mr. H. E. Bryant, a Governor.
8. Song by the School Choir : " What the Nightingale Sang "—
Mary Dobson.
9. The School Song : " Fidelitas "—*Mavis Thompson.*

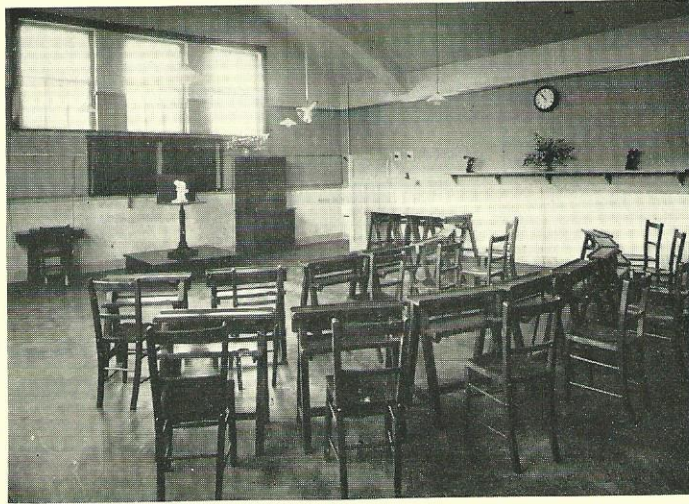
GOD SAVE THE KING.

Afternoon Tea will be served in the Dining Room.

The School Buildings will be open for inspection after the Ceremony.



*The
Art Room*



The History of the Brigg Girls' High School

by

F. J. BIRKBECK, M.A.

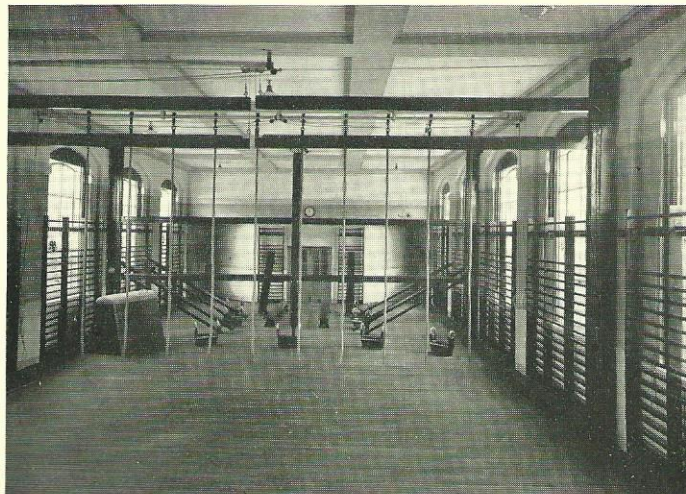
Director of Education.



The Brigg Girls' High School was opened in September, 1919, in the Congregational Sunday School-room. After a few weeks the School moved into wooden



*The
Gymnasium*



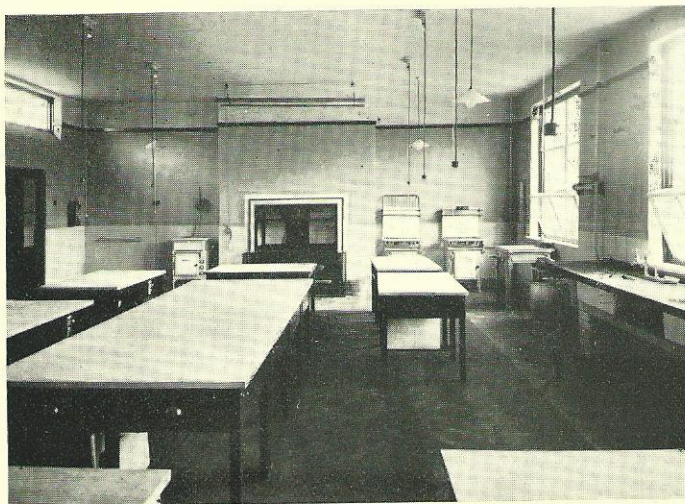
premises adjoining the Vicarage. Four rooms in the Vicarage itself were also used for School purposes, while a building nearby, which had previously been an Elementary School, was some years later equipped as a laboratory.

The School opened with 65 pupils and a staff consisting of the Headmistress, Miss M. L. Lardelli, and four full-time and two part-time Assistants. The School has grown steadily since that date, and there are now 110 pupils, with four full-time and four part-time Assistants.

On the death of Miss Lardelli, in 1935, the present Headmistress, Miss M. G. Liddle, B.A., Ph.D., was appointed.



*The Domestic
Subjects Room*



The School has from its foundation been approved by the Board of Education as a Secondary School and maintained by the Lindsey Education Committee. It is conducted under Articles of Government approved by the Board, which provide for a Governing Body of fifteen persons, eight of whom are appointed by the Lindsey Education Authority, three by the Brigg Urban District Council, two by the Brigg Rural District Council, and two are co-opted.

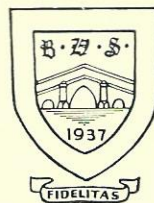
The temporary premises in which the School has been conducted for eighteen years were never convenient, and the wooden buildings in particular have now outlived their usefulness. The Lindsey Education



*The
Kitchen*



Committee in 1935 accordingly decided, with the approval of the Board of Education, to erect new buildings on a site on the Wrawby Road. These buildings, which were designed by the County Architect, Mr. P. W. Birkett, A.R.I.B.A., have now been completed at a cost of £23,520, the Contractors being Messrs. R. M. Phillips and Son, of Brigg.



**COOKE
BAILEY
LIMITED
MORLEY STREET
& CLOUGH STREET
STOKE-ON-TRENT**

Telephone: STOKE-ON-TRENT 2627

SCHOOL FURNITURE
AND SPECIALISTS IN
WOODWORK TO
ARCHITECTS'
SPECIFICATIONS

OFFICIALS OF THE GIRLS' HIGH SCHOOL, BRIGG

GOVERNING BODY.

Appointed by Lindsey Education Committee.

Rev. F. Burgess (Chairman); A. E. Spencer, Esq., C.C.; R. E. Hardy, Esq.;
H. E. Bryant, Esq.; Mrs. H. E. Bryant; E. I. Brown, Esq.; Mrs. Bush.

Appointed by Brigg U.D.C.

J. T. Kettle, Esq., C.C.; P. Cross, Esq.; J. Cash, Esq.

Appointed by Brigg R.D.C.

Mrs. Lowish; The Venerable The Archdeacon of Lindsey.

Co-opted.

Mrs. P. Cross; Mrs. Page.

Clerk to the Governors.

Edgar Taylor, Esq., Bigby Street, Brigg.

HEADMISTRESS.

Miss M. G. LIDDLE, B.A., Ph.D. (London), Honours in French.

STAFF.

Miss E. J. Elliott, B.Sc. (London), Honours in Chemistry.

Miss E. D. Maddock, M.A. (Oxford), Honours in English.

Miss D. M. Stewart, Liverpool School of Art, Board of
Education Diploma for Industrial Design.

Miss J. T. Tasker, B.A. (Cambridge), Honours in History.

Miss M. Webb, B.A. (London), Honours in Mathematics.

Miss W. M. Wright, 1st Class Diploma, Liverpool Physical
Training College.

Miss M. K. Murray, B.A. Hons. (London).

VISITING STAFF.

Domestic Science; Mrs. Dayson, Diploma in Domestic Science;
3 years course Sheffield College of Domestic Science.

Singing and Musical Appreciation: Dr. W. E. Rowbottom,
Mus. Doc. (Durham), F.R.C.O.

Elocution and Speech Training: Miss G. Lees, L.G.S.M. (Eloc.).
Pianoforte and Violin: Dr. W. E. Rowbottom.

Dancing: Miss Pilkinton, M.I.S.T.D., M.B.A.T.D., M.N.A.T.D.

PREFECTS 1937-38.

Head Girl—Betty J. Daughton.

Prefects—Mavis Thompson; Muriel Stubbs; Dilys Watts.

Sub-Prefects—Fanny Norris; Norma Shepherd; Trissie Williamson;
Kathleen Young.



AGENTS FOR CHILPRUFE

ERNEST CLARK

SPECIALIST IN SCHOOL OUTFITS,
BLAZERS, TUNICS, COATS, DRESSES,
CHILPRUFE UNDERWEAR

GLANFORD HOUSE, WRAWBY ST.

BRIGG
LINCS.

Telephone BRIGG 3102